

行動量・摂食量・摂水量測定<生体リズム測定>

Three-points Meter

Activity, food intake and water intake monitor

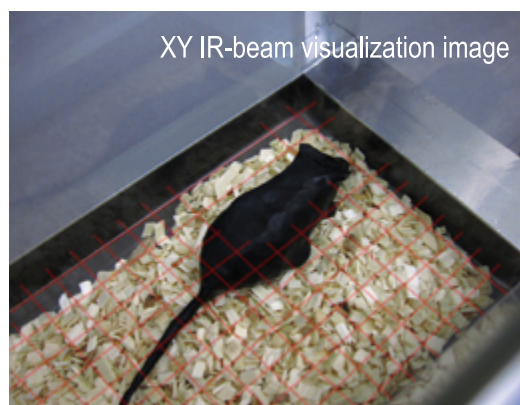
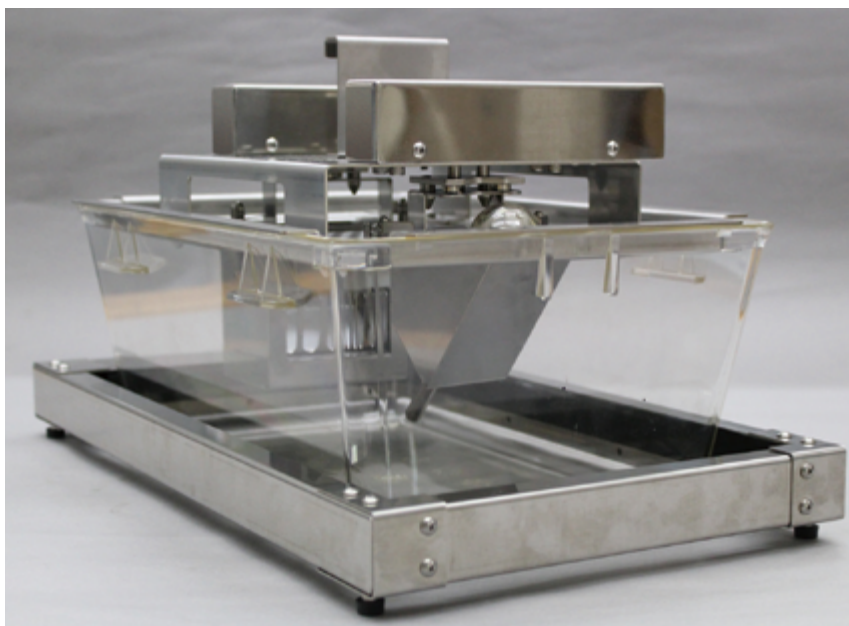
<amount of activity, food intake and water intake / biological rhythm >

※Multi chamber system (1 – 16 chamber)

Activity data acquisition software



Food and Water intake data acquisition software



This system can measure for 3 kinds of amounts: 1 ambulatory activity, 2 food intake and 3 water intake, at the same time within one cage. It is possible to measure at the same time such amount within 16 cages at the maximum (16 individuals) by means of a computer. For measuring activity, the position of the target is detected by interrupting the infrared beams positioned in the X and Y axis around the cage. This device detects the movement in position of the whole body of the target animal, without being misled by the movement of the tail and any other body. The position and movement of the target within the cage are automatically measured. The food box and the water bottle are placed under a precision scale and the software periodically measures the weight of the box.

Food intake and water intake are calculated by the difference between the measured weights. The apparatus is designed to eliminate dropped food, bedding material, and defecations to be added into the measurements. By using the software, time series data can automatically be saved as text files.

一般的なホームケージにおける動物の活動量と摂食量と飲水量を測定しますものです。摂食量と摂水量を測定するインテイクモニターシステムと、活動量を測定するXYビームセンサーシステムで構成され、最大16ケージ用(16個体)をコンピューター1台で同時に測定することが可能です。食べこぼしを摂食とみなさない餌箱と、乾燥と漏水のない給水瓶を利用して、正確な測定が可能です。1~8ケージ同時に、数日~1か月程度の連続した測定が可能です。(餌と水の補充と床敷交換が必要です。)